

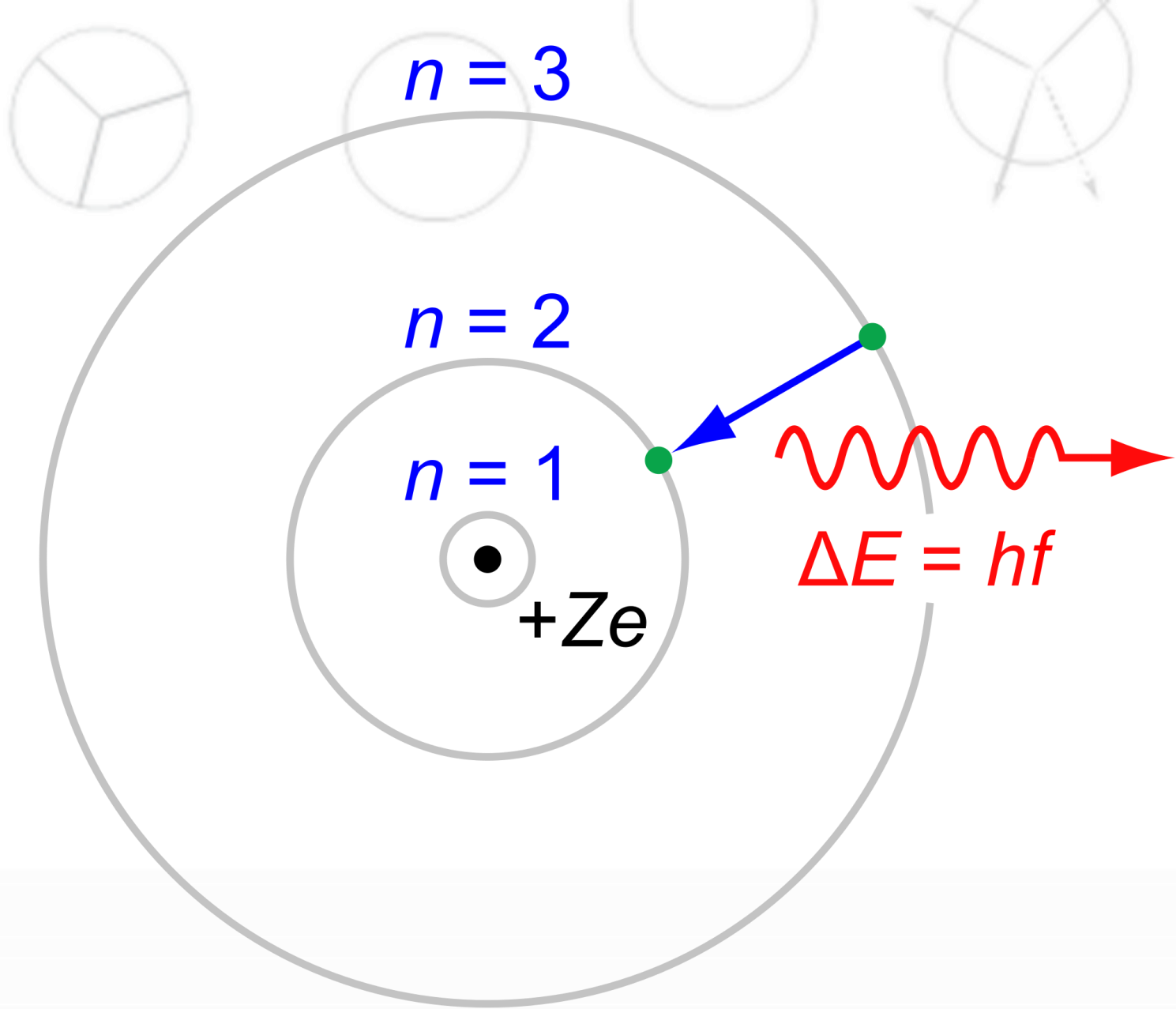


Bohrov model atoma

Tomaž Urbič

FKKT, Univerza v Ljubljani

www.fkkt.uni-lj.si





Electron energy

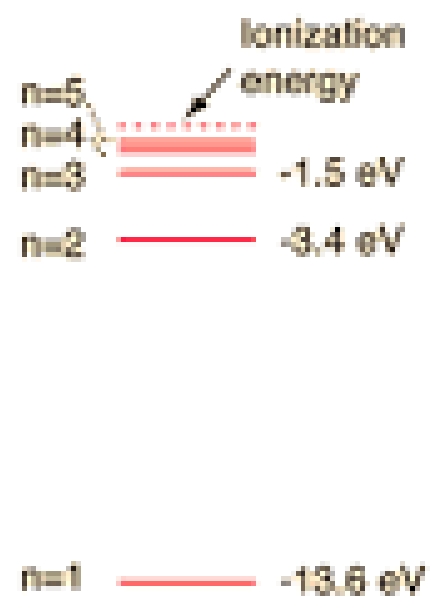
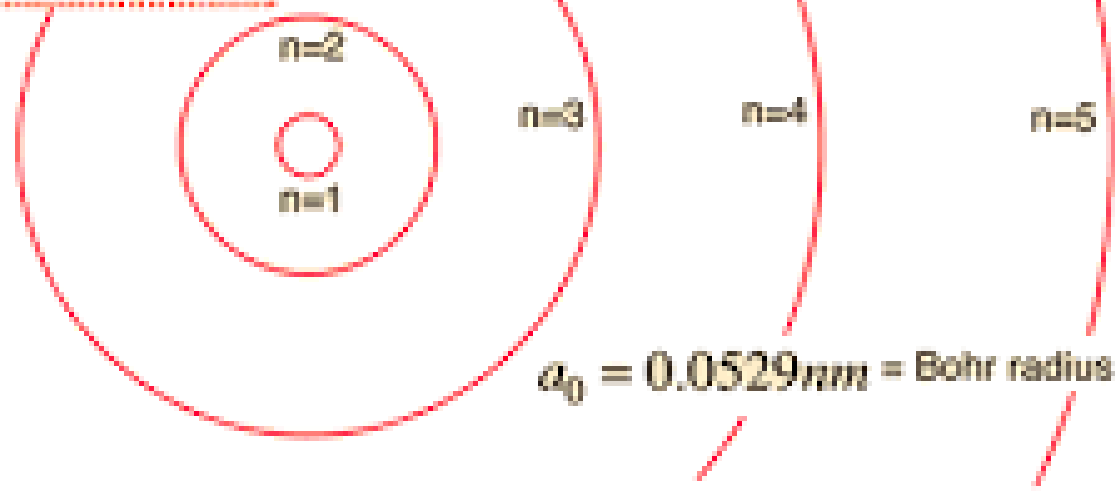
$$E = \frac{-13.6 \text{ eV}}{n^2}$$

Orbit Radius

$$r = n^2 a_0$$


Electron Wavelength


$$\lambda = 2\pi n a_0$$



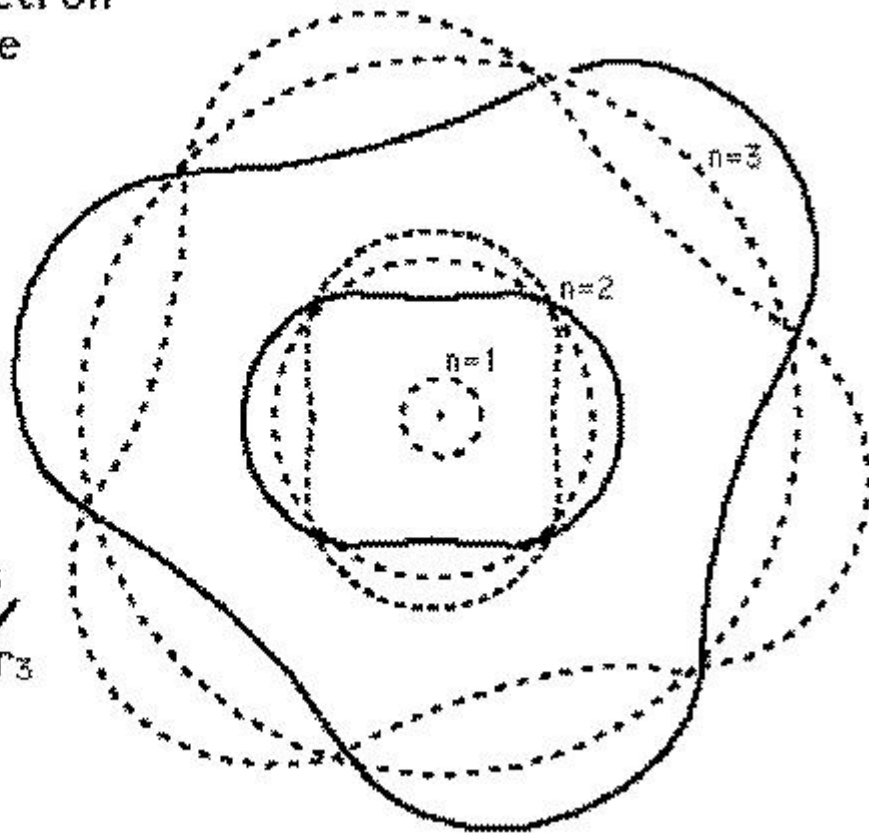
Visualization of electron waves for first three Bohr orbits

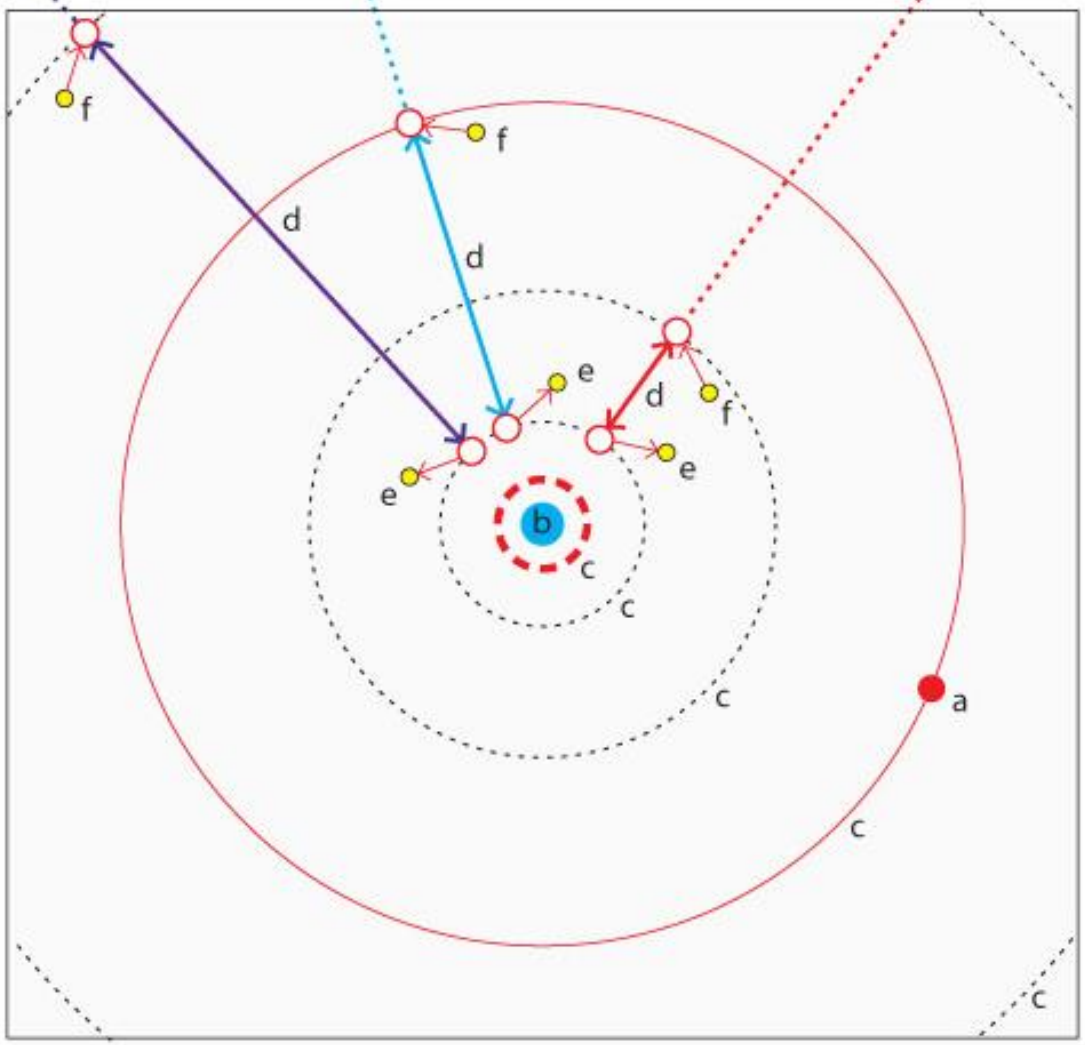
Electron wave resonance

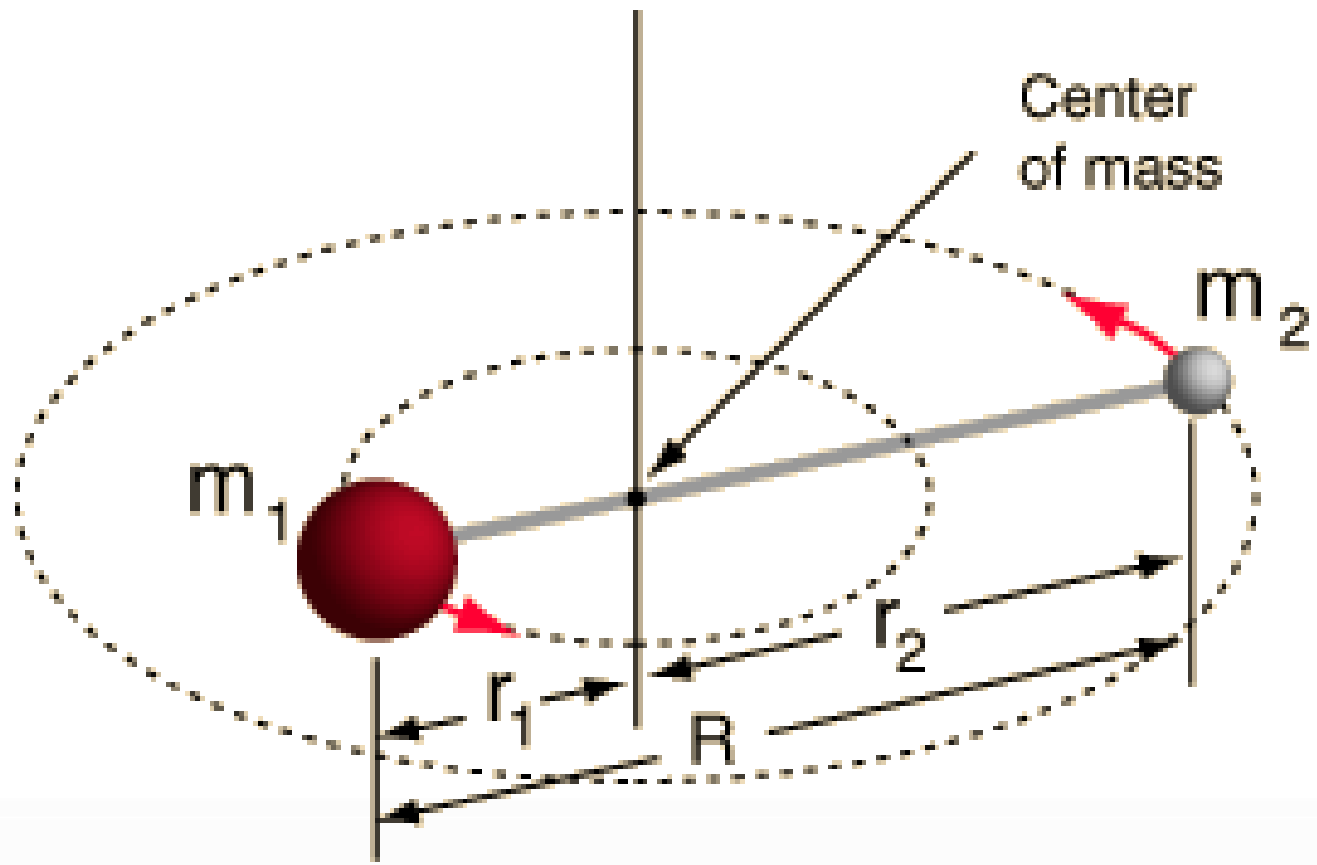
$n=1$
 $\lambda_1 = 2\pi r_1$

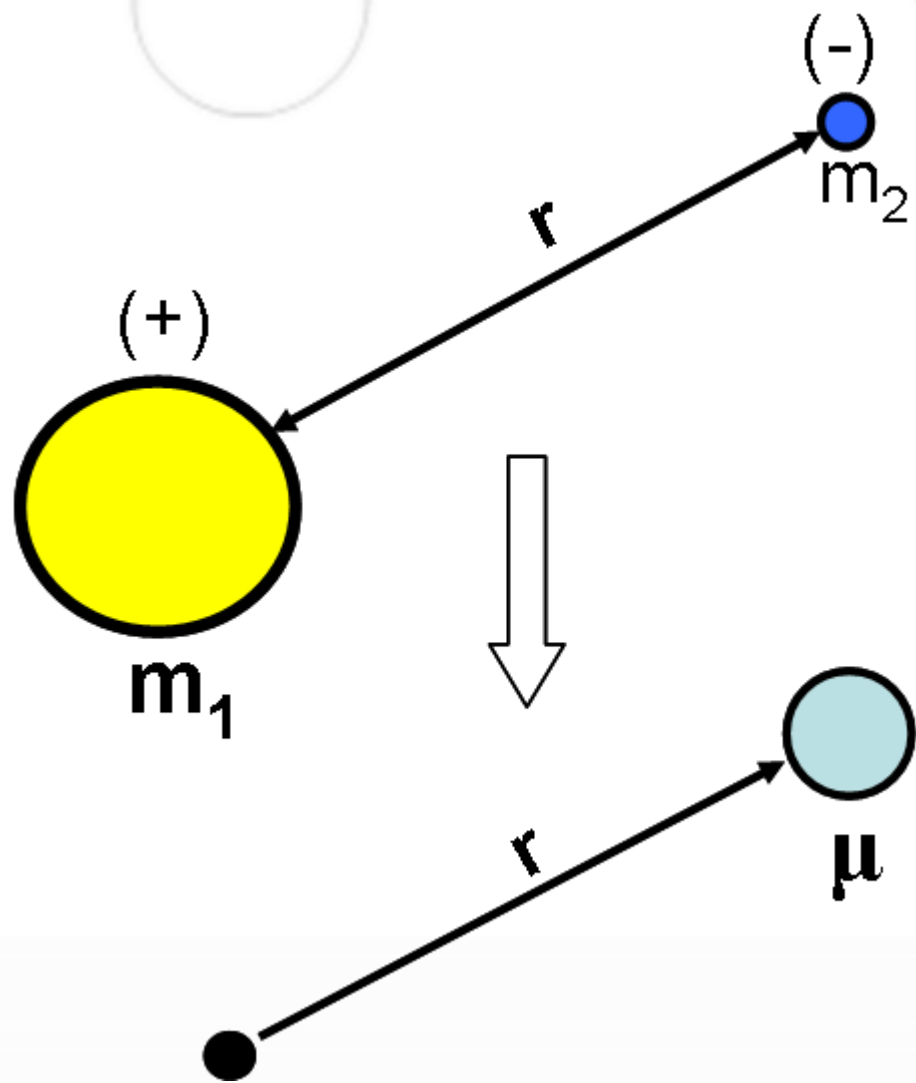
$n=2$
 $2\lambda_2 = 2\pi r_2$

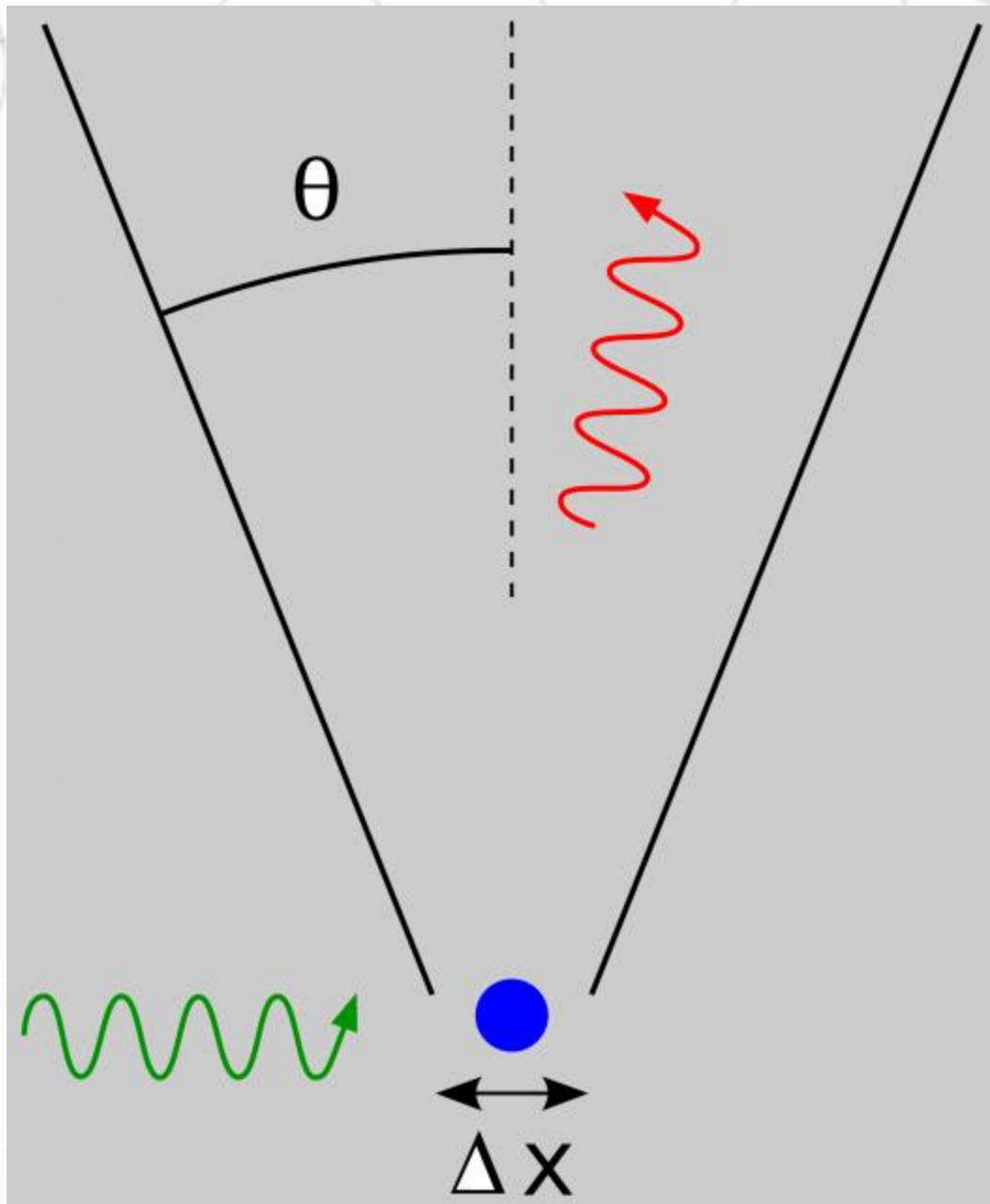
$n=3$
 $3\lambda_3 = 2\pi r_3$

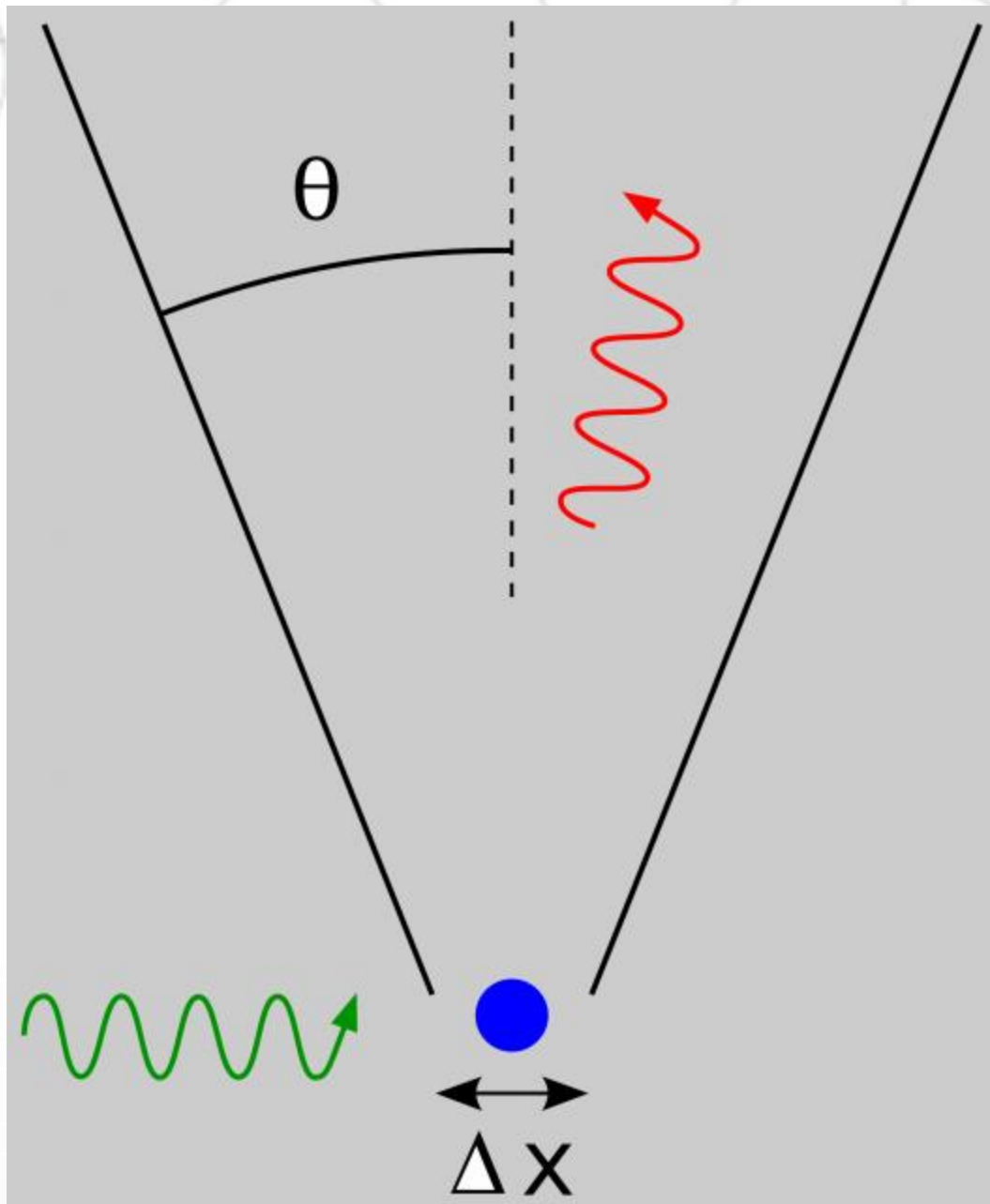












Hvala za pozornost.



tomaz.urbic@fkkt.uni-lj.si